

BULLETIN OF MONTHLY REVENUE

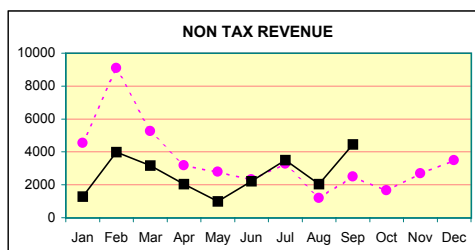
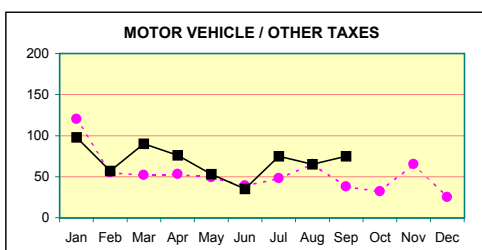
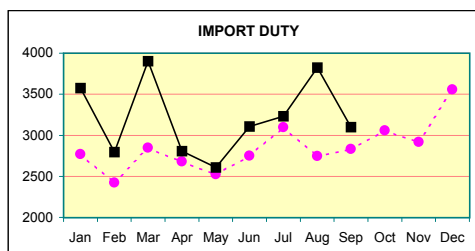
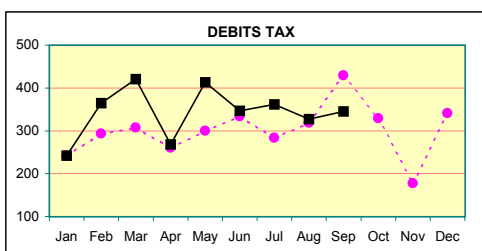
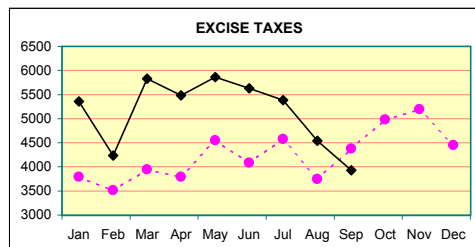
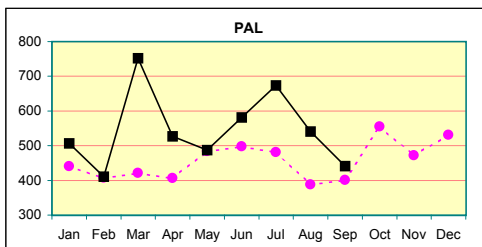
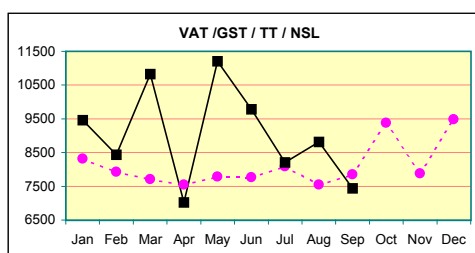
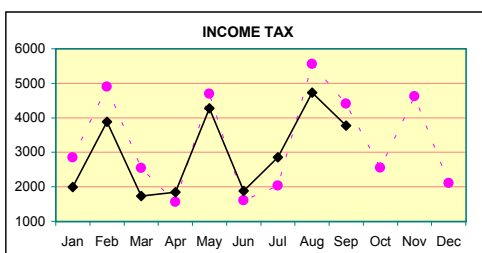
(ECONOMIC CLASSIFICATION)

VOL. 6

ISSUE NO: 9

Rs. Mn

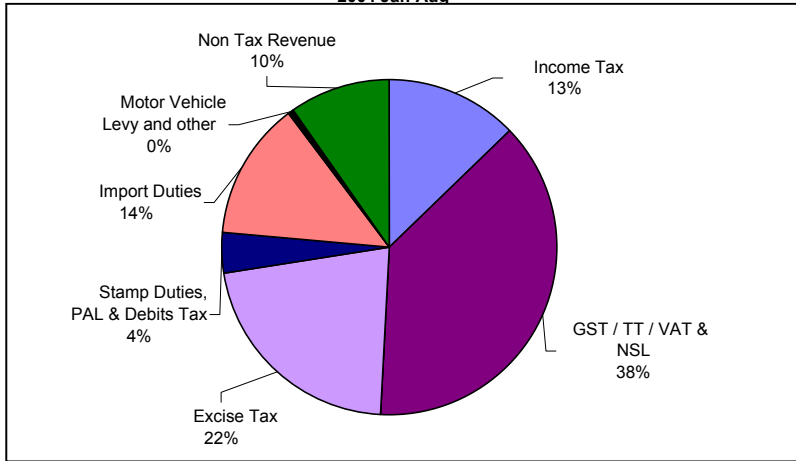
	2003 Actuals	2004 Rev'd. Budget	2003 Sep	2004 Sep	2003 Jan-Sep	2004 Jan-Sep	Growth Jan-Sep
1. Tax Revenue	231,648	276,488	20,325	19,103	168,975	192,047	13.7
Income Tax	39397	51918	4409	3777	30128	26965	-10.5
GST / Turnover Tax / VAT	97230	111858	7846	7437	70500	81187	15.2
National Security Levy	79	0	0	0	79	49	-38.0
Excise Tax	50972	58160	4372	3927	36353	46252	27.2
Stamp Duties	51	0	0	0	51	0	-100.0
Port & Airport Development Levy	5483	6515	401	441	3925	4921	25.4
Debits Tax	3611	4096	429	345	2764	3090	11.8
Import Duties	34184	41265	2830	3101	24656	28955	17.4
Motor Vehicle Levy and other	641	2676	38	75	519	624	20.2
2. Non Tax Revenue	44,868	38,572	2,481	3,240	34,090	20,996	-38.4
Rent	607	1373	56	50	453	746	64.7
Interest	7963	7172	1320	1255	6351	5108	-19.6
Profit and Dividends	5380	4600	277	681	3407	3191	-6.3
Sales and Charges	11806	8796	310	760	7797	7143	-8.4
Social Security Contributions	3037	4901	275	445	2181	2400	10.0
Other	16075	11730	243	49	13901	2408	-82.7
TOTAL	276,516	315,060	22,806	22,343	203,065	213,043	4.9



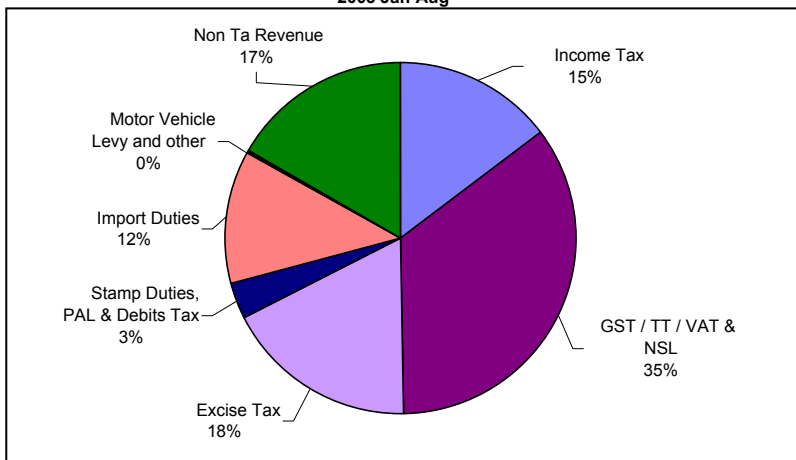
Legend ■ 2004 ● 2003

COMPOSITION OF REVENUE

2004 Jan-Aug



2003 Jan-Aug



PREPARED BY THE DEPT. OF FISCAL POLICY.