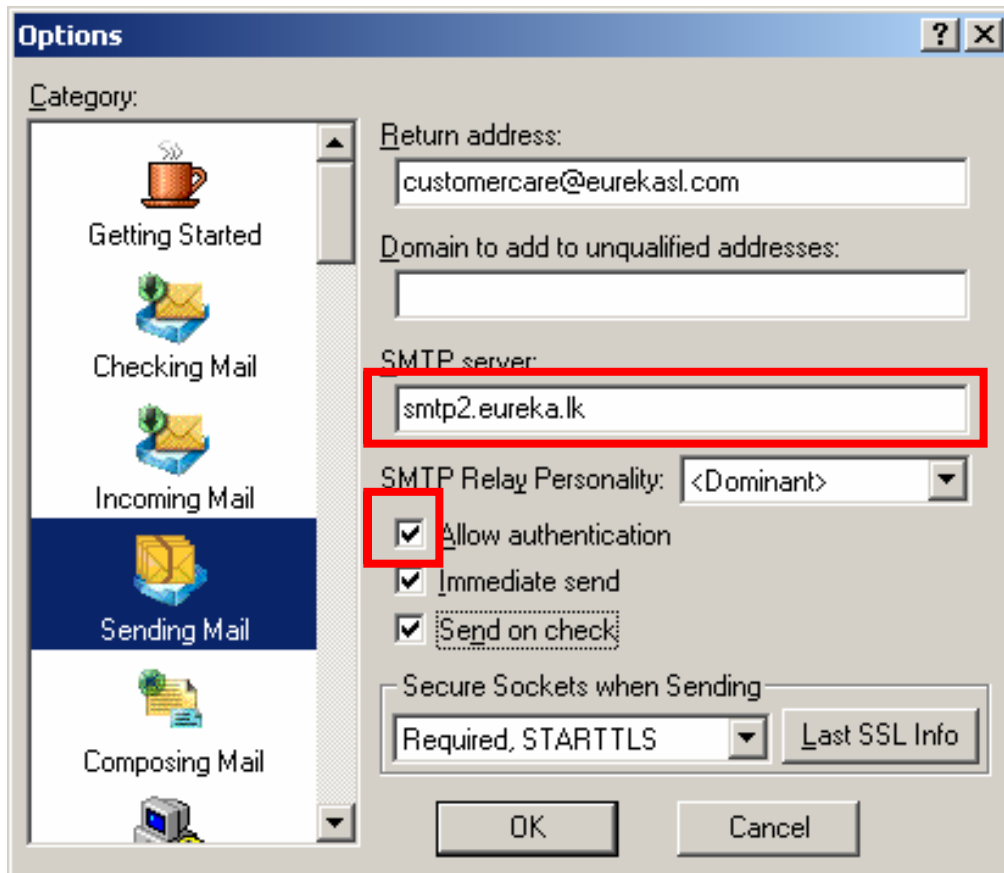


Sending Mail Authentication for Eudora

Click **Tools** and **Options** , Under *Category* Select **Sending Mails**



Under SMTP Server type **smtp2.eureka.lk**

Select **Allow Authentication** and Click on **OK** to Confirm.

This document was created with Win2PDF available at <http://www.daneprairie.com>.
The unregistered version of Win2PDF is for evaluation or non-commercial use only.